

2024
SUMMER EDITION



AllOffice



CONTENTS

2	WHY CHOOSE ALL OFFICE
4	FRAMERY
8	PREMIUM COLLECTION
20	CORPORATE COLLECTION
34	VALUE COLLECTION
40	CHAIRS
52	WORKSTATIONS
84	TABLES
94	STORAGE
102	WALL AND SERVER UNITS
104	ACCESSORIES
106	SCREENS AND MODESTY PANELS
108	POWER SUPPLY
110	MULTIPURPOSE
112	RECEPTION
116	SOFT SEATING
124	COFFEE TABLES
126	TEA COLLECTION

WHY CHOOSE ALL OFFICE



Excellent Customer Service

We thrive to ensure that you get the best. We live for ★★★★★ star reviews!



Performance

Our superior performance not only keeps our customers happy, but it enriches our lives too.



Relationships

We build long term relationships – with our customers, our suppliers, and our staff.



Expert Knowledge

Established in 1978, our staff have a vast knowledge to help you.



Premium Ergonomics

Our products are carefully chosen to ensure suitable health and wellness in your work environment.



Solutions Focused

We design solutions, rather than just fulfilling requirements.

Services

- Office Design and Planning
- Customised Office Furniture
- Lock Repairs

Services

- Office Relocation
- Carpet & Chair Cleaning
- Warehousing



framery

Soundproof Office Pods



Soundproof Office Pods

Framery is the pioneer and world's leading manufacturer of acoustic pods, phone booths and soundproof private spaces for solving noise and privacy problems in offices and other venues.

Framery products make employees happier and more productive in the offices of many of the world's leading companies, including Tesla, Puma and Microsoft. In fact, around 70 % of all 'Forbes Top 100' companies use Framery products.

Framery's product family is made from durable, renewable and recyclable materials and their pods are designed to have a long lifespan. With a strong focus on research and development, as well as a firm commitment to practice what they preach, they remain determined to find the keys to overall work-life happiness – in a sustainable manner.

INDUSTRY-LEADING QUALITY

Patented acoustic and airflow technology. World-class soundproofing. Echo-free soft acoustics. Flowing air ventilation. Optimal lighting for video calls and focused work.

THE NEW WORKSPACE

It's not just a pod. It's a way to transform workplace culture. Framery's fine-tuned technology adapts sound, light and airflow to work for you. Don't just look and sound good. Feel your best.

PUTTING SUSTAINABILITY TO WORK

Framery make the world's most sustainable pods. They are a net positive company – and create more global value compared to the resources they use.



Framery One Premium

- Height-adjustable seat
- Dual footrests
- Activated carbon filter
- Fully-customizable materials & finishes



Framery O Standard

- Height-adjustable stool
- White laminate table
- Power outlet with USB-C+A charge ports
- Additional upgrades available



Framery Q Meeting Maggie Premium

- 2 sofa options
- Turnable table
- 2 power outlets
- LED lighting
- Wall-mounted screenbracket
- Turnable monitor arm
- Adjustable lighting & ventilation



Framery 2Q Huddle

- Full-Sized Table
- Power Outlets + USB & HDMI Ports
- Wall-Mounted Screen Bracket
- Adjustable Lighting & Ventilation
- Optional Large Whiteboard Available
- Spacious Enough For 6 People



PREMIUM | COLLECTION

FLOAT



PREMIUM | COLLECTION

Float is a Certified Ergonomic Chair which brings state of the art design and premium production quality to the table. Aesthetically pleasing, comfortable and well-designed to promote good posture support.

8year
WARRANTY



Paddle Shift Levers



Sliding Seat



Adjustable Lumbar Support

SIGNATURE



PREMIUM | COLLECTION

Our Signature red dot award winning executive leather chair combines comfort with a sleek minimalist aesthetic. Designed by German craftsman Peter Horn, the Signature polished aluminium frame and premium leather front and microfiber PU back adds a touch of class to any office space.

5year
WARRANTY



Polished Aluminum Frame



Leather Front



Tension Adjustor

PIVOT



PREMIUM | COLLECTION

Pivot is a Certified Ergonomic Chair which has a premium build quality and feel that is entirely unique to itself, the 3D knit fabric is beautifully soft. Available in Back, White or Coral.

8year
WARRANTY



3D Knit Fabric



Height Adjustable Arms



Sliding Seat

ENGAGE



PREMIUM | COLLECTION

Our Engage Certified Ergonomic Chair comes from the talented Peter Horn and his company – Horn Design & Engineering. They have crafted a magnificent chair that leaves you engaged in its superb production quality and clean professional design. Engage is available in an all-black color scheme or a white frame with grey seat and mesh backrest.

8year
WARRANTY



Height Adjustable Arms



Sliding Seat



Adjustable Lumbar Support

IMPACT



PREMIUM | COLLECTION

The Impact is a Certified Ergonomic Chair. Stylish and functional, offering the perfect fit. Available in Blue, Black and Grey.

8year
WARRANTY



Adjustable Lumbar Support



Height Adjustable Arms



Self Adjusting Synchro Mechanism



CORPORATE | COLLECTION
 ERGONOMIC SOLUTIONS

COMFORTLINE



CORPORATE | COLLECTION

Comfortline is a certified Ergonomic chair and has been designed to offer the highest levels of comfort with its ergonomic design supporting your body in all the right places. The uniquely designed high tension mesh backrest and seat allows for breathability and adds a modern look to every office space whilst still offering maximum support. For maximum adjustability, Comfortline has a self-adjusting synchro mechanism and sliding seat.

8year
WARRANTY



Adjustable Lumbar Support



Height Adjustable Arms

LEAF



CORPORATE | COLLECTION

Comfort, flexibility and amazing back support are at the core of the design. The Leaf certified Ergonomic chair is designed to move with you allowing you to stretch while seated to help relieve pressure on your back. The moulded seat and padded back offer a comfortable ergonomic seating position and adjustable arms allow you to rest your arms at the correct height to relieve pressure from your neck and shoulders. To customise your seating position the chair has a self-adjusting synchro mechanism and sliding seat.

8year
WARRANTY



Adjustable Lumbar Support



Height Adjustable Arms

MOTION



CORPORATE | COLLECTION

Motion is a certified Ergonomic chair designed to meet everyone's needs. Standard features of Motion include a sliding seat, ensuring the best sitting experience for a wide range of body heights and a self-adjusting mechanism to provide optimum back support and balance.

8year
WARRANTY



Adjustable Lumbar Support



Height Adjustable Arms



Adjustable Headrest - Optional

CASSIE



CORPORATE | COLLECTION

Cassie is a certified Ergonomic chair designed to be versatile to your body's needs with both adjustable armrests and lumbar support adding further care to your spine and back muscles. The high tension mesh backrest allows for breath-ability and all day comfort.

8year
WARRANTY



Adjustable Lumbar Support



Height Adjustable Arms



Adjustable Headrest - Optional

ADAPT



CORPORATE | COLLECTION

Adapt office chair is a certified Ergonomic chair. With its uniquely designed high tension mesh backrest which allows for breathability and adds a modern look to every office space whilst still offering maximum support and comfort.

8year
WARRANTY



Adjustable Lumbar Support



Height Adjustable Arms



Adjustable Headrest - Optional

ACCENT



CORPORATE | COLLECTION

Accent office chair is a certified Ergonomic chair. With its uniquely designed high tension mesh backrest, it adds a distinguished look to every office space whilst still offering maximum support and comfort.

8year
WARRANTY



Adjustable Lumbar Support



Height Adjustable Arms



VALUE | COLLECTION

ESSENTIAL

VALUE | COLLECTION

Looking to create the perfect, fully functional workspace on a budget. The Essential Chair features a spring adjustable backrest with a mesh back, fabric seat and smooth gas lift cylinder.

5year
WARRANTY



Mesh Backrest



Spring Backrest



Gas Height Adjustor

PIXEL

VALUE | COLLECTION

The Pixel Chair features a swivel and tilt mechanism, a mesh back, fabric seat and smooth gas lift cylinder.

5year
WARRANTY



Mesh Backrest



Tension Adjuster



CHAIRS

ASPEN

Aspen's contoured backrest and waterfall seat ensures maximum comfort and back support.



High Back Chair



Arm Chair

Executive High Back Chair

MIRAGE

This elegant design provides a sleek, rich look incorporating comfort and style.



Arm Chair

Executive High Back Chair

BLAZE

The Blaze mesh back chair has a moulded foam seat and adjustable lumbar, suitable for compact spaces.



Operators Chair



Operators Chair

Operators Chair

NOVA

The Nova chair with a black mesh backrest and moulded foam seat allows for maximum comfort and support.



Operators Chair



Operators Chair

Operators Chair

PEGASUS

This chair is orthopedically designed to follow the contours of your back. The Synchro mechanism gives you optimal back support for different working conditions.



High Back Chair

ROMA

Roma's shaped backrest and waterfall seat provides ultimate comfort and will enhance any office environment.



High Back Chair

VIVID

The Vivid swivel and tilt chair combines comfort, aesthetic styling and functionality.



Operators Chair



Operators Chair



Operators Chair

ASCOT

This modern looking chair is supported by a comfortable backrest.



High Back Chair with Arms



High Back Chair



Typist Chair



Draughtsman Chair

PISA

All you would ever need in a chair, combining comfort and practicality with value for money.



High Back Chair



Mid Back Chair



Arm Chair



Side Chair

BUZZ

The Buzz multi-functional chair will keep you comfortable and well supported throughout the day.



ECONO TYPIST

The Econo typist chair offers the best value in its category.





WORKSTATIONS

RAVEN

The Raven office desk is designed to make a statement in any office space. Modern and stylish the suite features solid oak legs accentuated by strong solid lines. Three drawers, cupboard and dedicated housing for your computer provides ample spacing for everything you need.



Raven Workstation with Meeting Table and Wall Unit



Raven Workstation with 3 Drawer Credenza

CORTEX

The dark walnut colour tones with inlay metal legs brings a sleek and elegant presence to your office. The under-desk storage with built-in shelving cupboards and draws ensures everything is close to hand when required without cluttering the desk.



Cortex Workstation



Cortex Workstation



Cortex Workstation with 3 Drawer Credenza

NOVARA

Minimalist design for the contemporary office with the essentials. Novara is an open and airy workplace with elegant uncluttered options.



Novara Workstation



Novara Workstation with 3 Drawer Credenza



Novara Workstation

GALLANT



Galant Workstation

Gallant is a modern office suite with a subtle elegance which gives it a distinctive look that leaves a lasting impression.



Galant Workstation



Galant Workstation with 4 Drawer Filing Pedestal and 3 Drawer Credenza

DENVER

The Denver Workstation combines a modern leg design with functional storage. With clean, sharp lines, to enhance your office environment.



Denver Workstation



Denver Workstation with 3 Drawer Credenza



Denver Workstation

HERITAGE

Improve the look of your office with this modern, stylish and affordable range. Available in veneer and melamine.



Heritage Workstation with Wall Unit and Server Unit



Heritage 3 Drawer and Credenza Workstation



Heritage Server Unit



Heritage Wall Unit

SIMPLICITY

The versatile beam system is the mainstay of the design and allows you to easily extend work surfaces at minimal cost.



Simplicity 4 Way Back to Back Workstations with Combo Storage Units



Simplicity Managers Workstation



Simplicity Meeting Table



Simplicity Combo Storage Units

SIMPLICITY

Simplicity has a cable management system that neatly houses cables. The wide selection of desk finishes and colourful screens can enhance your working environment.



Simplicity 8 Way Back to Back Workstation with Pedestals

FLEXILINE

Flexiline offers a variety of options to create interesting and optimal office environments through the use of its beam-based system and various leg options.



Flexiline 4 Way Back to Back Workstation with 60x40mm Legs

FLEXILINE

The multi-function beam provides a built-in cable management system which reduces clutter and allows Flexiline to be a cost effective open plan systems desk, while still offering unique design features.



Flexiline 4 Way Back to Back Workstation with Oval Legs

FLEXILINE

The Flexiline wooden hoop leg has a clean and light aesthetic appeal. The sleek and functional lines together with the complimentary colour options can enhance your studio or office space.



Flexiline 4 Way Back to Back Workstation with Wooden Hoop Legs

BENCHMARK

Benchmark optimises floor space by use of rectilinear planning, increasing functionality. The scalloped desk tops enhance the style and ergonomics.



Benchmark 4 Way Back to Back Workstation

Benchmark Manager's Workstation

WAVES

The comfortable curved worktops can be shared or used alone. Waves allows for future growth or changes and is an excellent option for a modern working environment. The desk specifically ensures the correct ergonomics and user comfort. Screens allow for privacy whilst maintaining people interaction.



Waves Workstation with Credenza



Waves 2 Way Workstation with Pedestal

CONTRACT

Below is a selection from our Contract Range offering unbeatable value and style, allowing you to furnish your office with an assortment of seating, desking and storage solutions.



Ecoline with Credenza, Curved Link and 3 Drawer Pedestal



Ecoline with Credenza, Curved Link and 2 Drawer Pedestal



Ecoline with L-Extension, Curved Link and 3 Drawer Pedestal



Flowline with 2 Drawer Pedestal

STANDING DESKS



StepUp

Height adjustable desks allow you to work at a healthy sit-stand workstation, resolving spinal shrinking and body discomfort. International studies have found both health and productivity benefit when height adjustable work surfaces are used in the workplace.



Elevate



TABLES

TABLES

Our comprehensive range of boardroom tables will meet every requirement. There are many styles and finishes to choose from. The tables are available in a range of seating capacities and finishes.



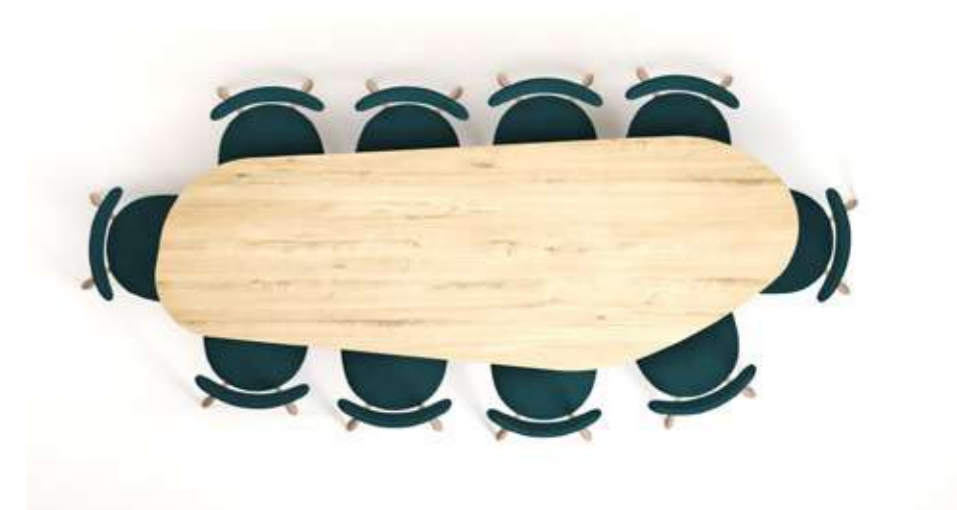
Daxton



Larkin



Alford



Alford

TABLES



Kenzi



Kenzi



Raven



Simplicity

TABLES

Flex Flip table features a versatile flip top design which enables the tables to be reconfigured to suit any meeting room requirements. These tables are ideal for training or interactive conferences.



Flex Flip



TABLES

A selection of boardroom and multipurpose tables available in different sizes and finishes.



Rectangular and Trapezoidal Training Tables



Everest High Table



Rectangular Table



Round Boardroom Table



Zippy Folding Table



Curved Boardroom Table



STORAGE

STORAGE

This selection of storage will complement and enhance any range of office furniture. Included are filing cabinets, bookcases, pedestals and systems cabinets, all of excellent craftsmanship. The finishes will add style to any office environment.



Mobile Pedestals

Day Filer Pedestals



Under Desk Pedestals



Sonic



Evolve

STORAGE



Filing Cabinet



Quickfile 3 Drawer



Quickfile Software



Quickfile 2 Drawer



Roller Door Systems Cabinet



Steel Shelving Units



Zippel

Save up to 40% space



Steel Filing Cabinets



Stationery Cupboards



Factory Lockers



Modular Storage

STORAGE



Contract Bookcases



Contract Roller Door Cabinet



Contract Filing Cabinet



Contract Hinged Door Bookcases



Contract Hinged Door Bookcase

WALL AND SERVER UNITS



Our range of wall units and server units are stylish, functional and are available in a variety of finishes.

Heritage Wall Unit



Heritage Server Unit



Evolve Server Unit

ACCESSORIES

This selection of accessories will complement and enhance any range of office furniture.



Perforated Accessories

Plastic Waste Bin

Wooden Waste Bin



Pinboard



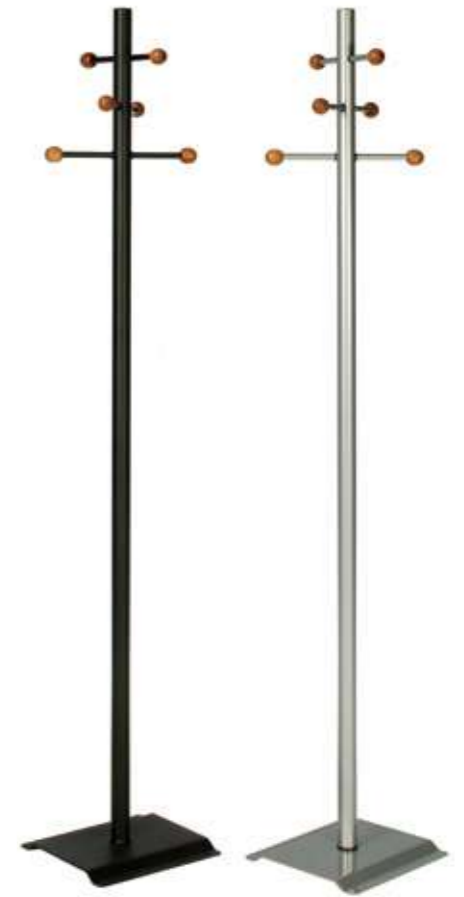
Whiteboard



Glass Whiteboard



Carpet Protector



Hat and Coat Stand



Agilis



Footrest

SCREENS AND MODESTY PANELS

A selection of screens and modesty panels that will complement and enhance any range of office furniture, available in a variety of finishes.



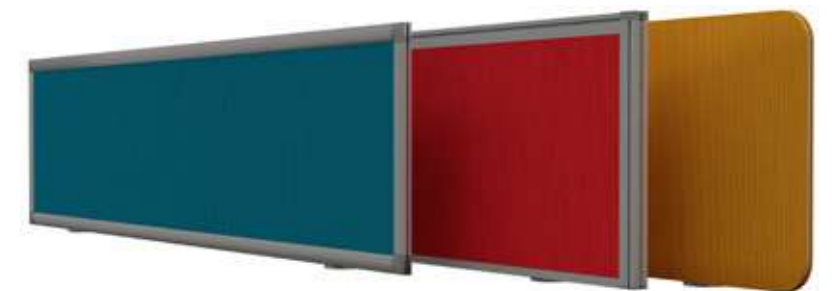
Linking Screen



Aluminium Frame Linking Screen



Plexiglass Screen

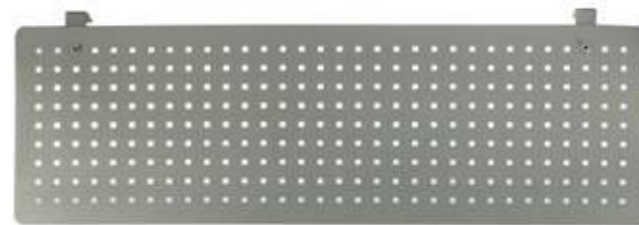


Aluminium Frame Screen

Frameless Screen



Melamine Modesty Panel



Perforated Steel Modesty Panel



Curved Fabric Screen



Straight Fabric Screen

POWER SUPPLY



Punto Standard

Punto Power USB

Punto Power, Data & USB

Punto Power, Data & HDMI



Slimline Iris



Slimline Omega



Oblique



Horizontal Power Doc



Rotadock



Cable Zip Bag

In the chaotic world of wires and cables by which we are constantly surrounded, there is a need for order and organization. The Zip bag solves this problem.



Cable Vertebrae

The Slinky is an efficient cable management solution with a large weighted base for extra stability.



Slinky

We provide a wide variety of cables to complement each product range.



Input Cable Normal



Input Cable Clean



Input Cable

These include a full range of input (infeed) power cables supplied with moulded plug tops and a female connector (or hardwired into the product) as well as interconnecting cables which allow users to extend or reconfigure their office power units as required.



Interconnect Cable



Interconnect Cable Normal



Interconnect Cable Clean

These cables and connectors can be supplied in a variety of lengths, ratings, and connector combinations to suit any application.

MULTIPURPOSE

Our wide range of functional and durable multipurpose tables are available in many colours and sizes. Choose from a selection of chairs in a variety of styles to suit any area.



Orbit Bar Table



Enhance Bar Stool



Zone



Zone



Orbit Large



Orbit Medium



Array



Easy Stacker



Apex



Nexus



Torino



Quest



Integra



Tux



Fuse

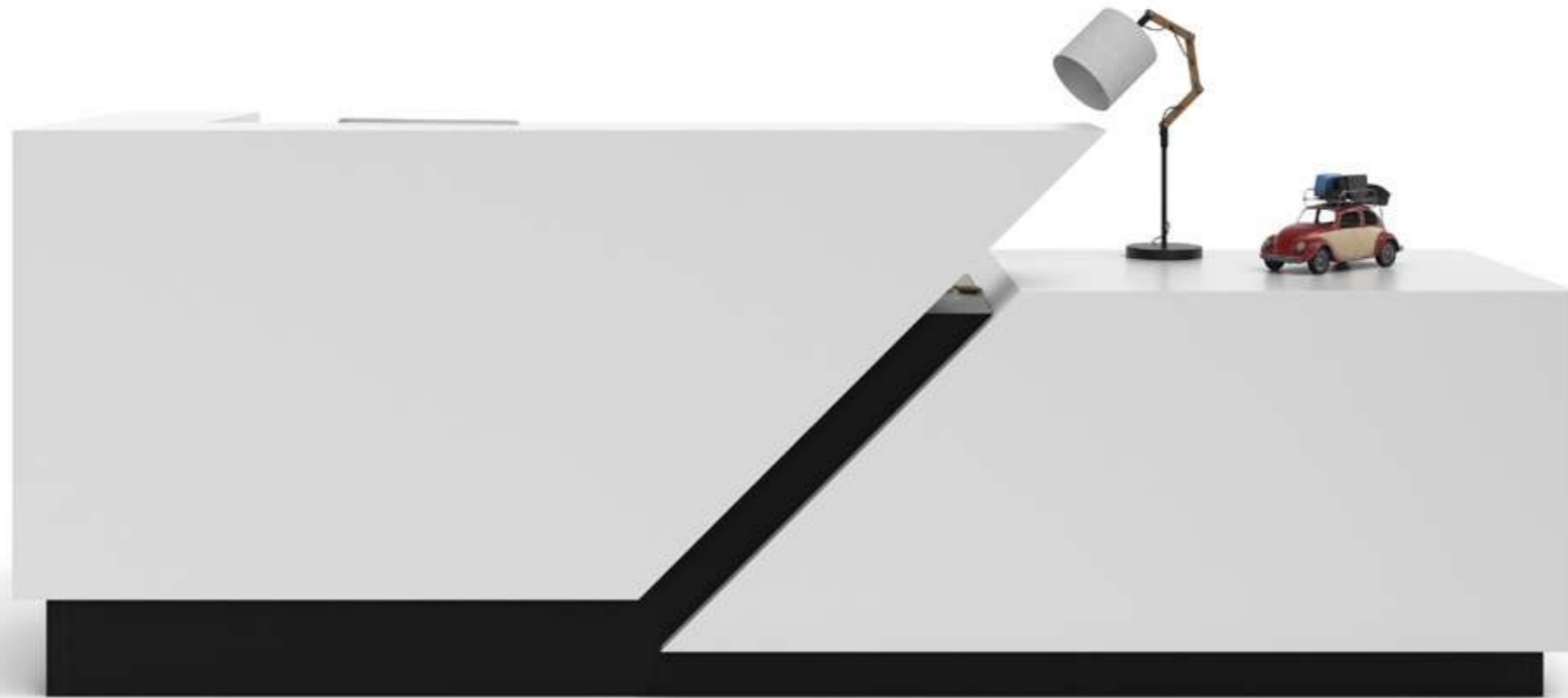


Zest



RECEPTION

Your first impression when visiting a business is usually set by the reception area.



Sutton



Ripple



Ripple



Pelham

RECEPTION

We offer a range of reception desks that will help create a good impression of one of the most important areas in your company.



Linear



Impressions



Impressions



Linear

SOFT SEATING



SOFT SEATING



Surround 2-Seater Pebble Small Surround Single Seater Surround Booth with Table

Redefine your space with our soft seating ranges which offer style, comfort and flexibility. Choose from an extensive collection of vibrant colour fabrics to create a unique look for your company.



Synergy



Pebble Large Tuffet Oval Tuffet Triangle Tuffet Round Tuffet Square



Create Double Create Ottoman Create Single



Relay

SOFT SEATING



Vida



Nova



Savvy



Fusion



Relate



Refine



Serene



Icon



Unity



Muse



Entity



Spruce



Chicago



SOFT SEATING



Opal



Genoa



Casa



Aruba



Lamont



Pavilion



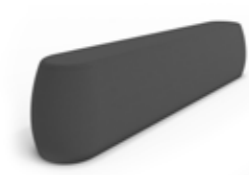
Perla



Quadro



Orton



Timon

COFFEE TABLES



Tops are available in a variety of finishes, colours and sizes.

Loop Round

Loop Plectrum

Swirl is a versatile range of coffee tables and side tables that will breathe life into any area. Available in a variety of finishes, colours and sizes.



Swirl Large



Swirl Medium



Swirl Small



Loop Square



Loop Rectangle



Plexa



Giro



Lynx





TEA COLLECTION

OFFICE | SOFT | COMMERCIAL | HOSPITALITY

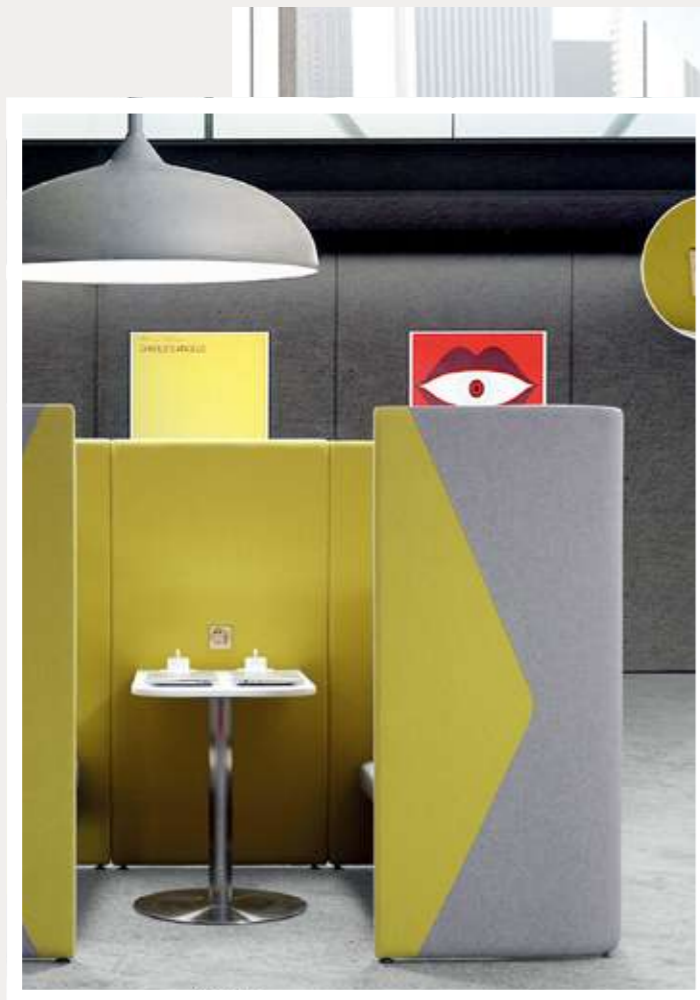
TEA COLLECTION

OFFICE FURNITURE

**The product range includes**

Office furniture, office chairs, unholstered furniture, high partition screens, steel cabinets, sound insulation panels, carpets, curtains and lamps.





The product range includes

Armchairs, couches, booths, modular units.



TEA COLLECTION



The product range includes

Sales center, library, clubhouse, terminals, brand stores.



TEA COLLECTION



HOSPITALITY FURNITURE

TEA is the supplier of interior decoration for Sheraton Hotel, Marriott Hotel, Park Hotel and Hilton (Garden) Hotel.



AllOffice

YOUR OFFICE CAN DO MORE, FOR
YOU AND YOUR CUSTOMERS

Find out how at www.alloffice.co.za

HEAD OFFICE | SHOWROOM | DISTRIBUTION CENTRE

Mavro Building | 9 Browning Road | Observatory | 7925

PO Box 118 | Observatory | 7935

E-mail: info@alloffice.co.za

Tel: (021) 440 7700 | Fax: (021) 440 7788

DISTRIBUTION CENTRE

(Collection by Appointment Only)

196 Nectar Street | Pomona | Kempton Park | 1623

E-mail: infojhb@alloffice.co.za

Tel: (021) 440 7700

